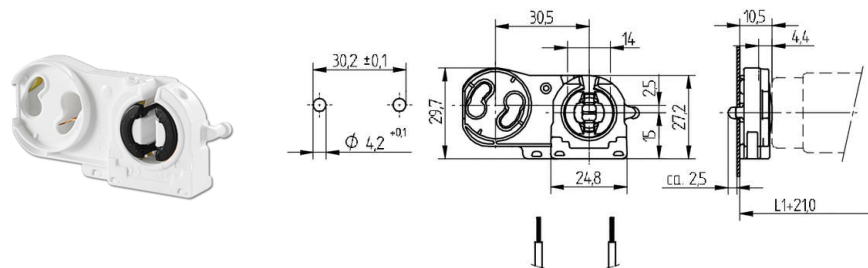


 Create pdf

Lampholders and starter holders

26.422.5010

G13 End fixing lampholders



L1+21.0: Recommended dimension - the final distance should be governed by the dimensions of the respective lamps and luminaires.

colour	pkg.	wt.	part no.
white	500	8 g	26.422.5010.50

With starter holder

Lampholder thickness: 10.5 mm

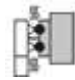




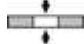

Approval: additional cULus (660W /600V)

Wiring: through the body

Snap in pins

Housing: PC

Rotor: PBT

T 130	Tm 110					 18 AWG 0.5 - 1.0 mm ²	 0.5 - 1.1	
-------	--------	---	---	---	--	--	--	---

Document generated on: Mo, 6. February 2017 - 11:14